

Target audience: Any young adult between the ages of 16 – 17 (Key Stages 4 & 5) who can demonstrate a genuine commitment to the aims and objectives of the course and an intention to fully participate in the experience.



RYLA & RYLA Re-visited

Whilst the summer course builds the fundamentals of leadership targeting.

- Communication
- Listening
- Team work
- Planning
- Evaluation both self and as a team
- Presentation skills

The follow on 'Revisited' course is geared more towards the individual, building on the skills learnt during the summer course.

By the end of this Revisited weekend, individuals will:

- Have an understanding of appropriate delegation, time management and team working and better demonstrate, through practical exercises, the dynamics of effective team work
- Start to understand the differences and values of leaders, managers and team members within any situation
- Be given the opportunity to explore their strengths and development in a supportive environment . Both through the tasks and personal profiling.

For further details contact you local Rotary club which is:

Alternatively contact us at ryla.wessex@gmail.com

YouTube: https://youtu.be/60J_9D6UEEw



For Website: Google search :
Rotary District 1110 Youth Services



A Guide for Teachers and Youth Workers

Rotary Wessex CIO



A Rotary fully funded Leadership Weekend for key stage 4 & 5 Students



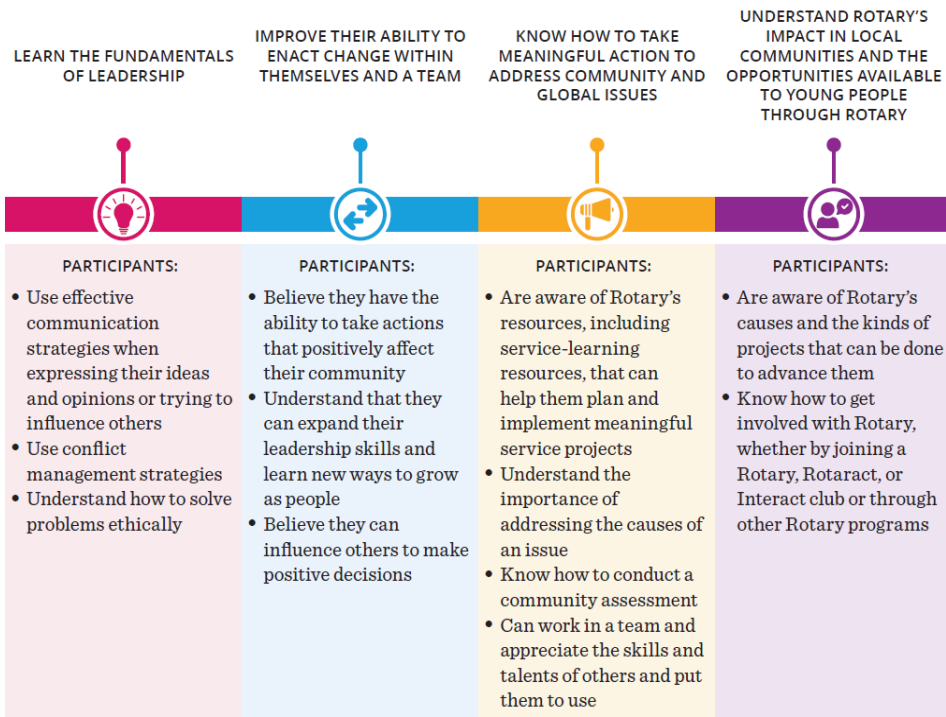
Vision: To provide an opportunity for **any** young adult to explore and kick start their potential for the future. Our

What is RYLA ?

Rotary Youth Leadership Awards (RYLA) is an intensive leadership program for young people. It allows participants to learn new skills through civic engagement and provides opportunities for personal and professional development

RYLA aims to:

- * Provide an effective training experience for all young people and potential leaders
- * Encourage leadership of youth by youth
- * Encourage youth to make a difference in their communities through volunteer work and social responsibility
- * Instil a lifelong commitment to service in young people and connect them with ongoing opportunities to serve through Rotary



How RYLA can fit into the National curriculum

During the 2 day all expenses paid course, we cover many key aspects of the National Curriculum . These **key stages 4 and 5** topics are discussed and presented through a non traditional and relaxed manner.

Additionally, the course offers the ability to undertake activities that through time constraints, are not usually found on the curriculum,. Many of these subject areas are valued by future employers.

Through a mixture a classroom based seminars and outdoor sessions, the students formulate their own ideas guided by our facilitator team.

We explore many Key aspects of the National Curriculum including:

- **Communication** : Different types & Barriers, Public speaking
- **Self management** : Incentivised Goal setting
- **Working with others** : Fellowship
- **Problem solving & Critical thinking** : Practical tasks and Seminar discussions
- **Personnel development** : Leadership fundamentals, Leading a meeting, Facilitation
- **Activity-Enquiry based learning** : Indoor and outdoor activities
- **Self-assessment & Independent learning**
- **Direct interaction and understanding of Voluntary groups** in society and what they offer to better both the local on global community.
- **Outdoor activities** which present intellectual and physical challenges and encourage students to work in a team, building on **trust** & developing skills to solve problems, both individually and as a group